

moda



48" x 64"

# Chicken Coop

Featuring **Break of Day** by Sweetfire Road

moda

# Chicken Coop by Sweetfire Road

## Pattern Notes

**Finished Quilt Size:** 48" x 64"

**Finished Block Size:** 8" x 8"

**Backing Required:** 4 yards

**Batting Required:** 56" x 72" piece of batting

## Cutting Instructions

(WOF = Width of Fabric, HST = Half Square Triangle, RST = Right Sides Together)

(Applique instructions included in this pattern are for raw edge applique, therefore applique templates do not include a seam allowance. It is recommended to trace Chicken Bonnets onto the smooth side of fusible web. Follow the cutting instructions to fuse applique to the fabrics indicated. Or proceed using your preferred method of applique.)



**From Background Fabric (43104 11): 3 yards**

- Cut (7) 2" x WOF strips. Subcut (132) 2" squares for Chicken Blocks.
- Cut (4) 8½" x WOF strips. Subcut the following:
  - (44) 1½" x 8½" rectangles for Chicken Blocks.
  - (44) 1¾" x 8½" rectangles for Chicken Blocks.
- Cut (3) 1¼" x WOF strips. Subcut (88) 1¼" squares for Chicken Block Assembly.
- Cut (2) 2" x WOF strips. Subcut (44) 2" x 1¼" rectangles for Chicken Block Assembly.
- Cut (11) 2" x WOF strips. Subcut the following:
  - (44) 2" x 3¼" rectangles for Chicken Block Assembly.
  - (44) 2" x 4½" rectangles for Chicken Block Assembly.
- Cut (4) 6 ¼" x WOF strips. Unfold the WOF strips to avoid cutting errors. You may stack (2) strips with right sides facing up to cut more than one piece at a time. Subcut the following:
  - (22) Template B pieces.
  - (22) **Reversed** Template B pieces. Reverse templates by placing the template onto the fabric printed side down, wrong side up.



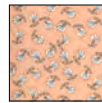
**From Star Background Fabric (43104 21): ⅛ yard**

- Cut (2) 1½" x WOF strips. Subcut the following:
  - (16) 1½" squares for Star Block Assembly.
  - (16) 1½" x 2½" rectangles for Star Block Assembly.



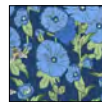
**From Applique Bonnets & Binding Fabric (43102 13): ⅝ yard**

- First, cut (6) 2¼" x WOF strips for binding.
- Set the remaining yardage aside for Chicken Bonnet Applique cutting instructions below.



**From Applique Bonnets & Star Center Fabric (43107 13): ¼ yard**

- Cut (1) 2½" x WOF strip. Subcut the following:
  - (4) 2½" squares for Star Block Assembly.
  - (16) 1½" squares for Star Block Assembly.
- Cut (1) 1½" x WOF strip. Subcut (16) 1½" squares for Star Block Assembly.
- Use the remaining yardage from both Chicken Bonnet fabrics to fuse (22) Chicken Bonnet Appliques and (22) **Reversed** Chicken Bonnet Appliques onto the wrong side of fabric. Cut out each bonnet on the traced line and set aside. Separate regular Chicken Bonnets and reversed Chicken Bonnets.



**From Navy Floral Fabric for Stars (43101 14): ¼ yard**

- Cut (2) 2½" x WOF strips. Subcut (32) 2½" squares for Star Block Assembly.



**From Green Fabric for Stars and Chickens (43102 17): ½ yard**

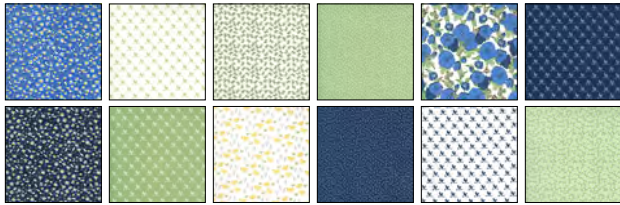
- Cut (3) 2½" x WOF strips. Subcut the following:
  - (16) 2½" x 4½" rectangles for Star Block Assembly.
  - (16) 2½" squares for Star Block Assembly.
- Set the remaining yardage measuring 10½" x WOF aside for the Chicken Block Cutting Instructions.



**From Chicken Beak Fabric (43106 18): ⅛ yard**

- Cut (1) 2" x WOF strip. Subcut (44) 2" x ¾" rectangles for Chicken Block Assembly.

**From (12) Assorted Ivory, Green, Light Blue, and Navy Prints for Chicken Blocks (1/4 yard each):**



- Cut the following to make (1) right facing Chicken Block. Repeat instructions (22) times using assorted prints to make (22) right facing Chicken Blocks. (Each Chicken Block only uses one print fabric.) Keep cut pieces for each block separated for organization.

- o (1) 2" square.
- o (1) 2" x 1 1/4" rectangle.
- o (1) Template A.
- o (1) 4 3/4" square.

- Cut the following to make (1) left facing Chicken Block. Repeat instructions (22) times using assorted prints to make (22) left facing Chicken Blocks. (Each Chicken Block only uses one print fabric.) Keep pieces cut for one block separated for organization.

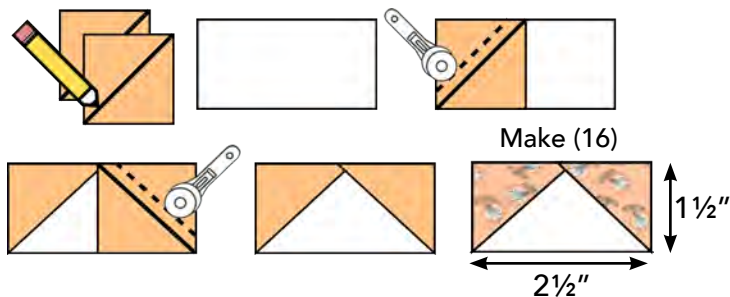
- o (1) 2" square.
- o (1) 2" x 1 1/4" rectangle.
- o (1) **Reversed** Template A. Reverse templates by placing the template onto the fabric printed side down, wrong side up.
- o (1) 4 3/4" square.

**Assembly:**

**Making the Star Block:**

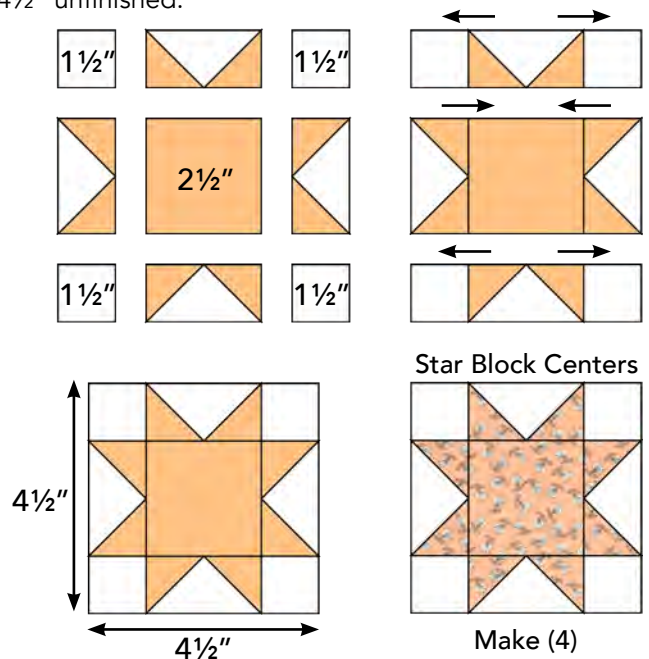
**8" x 8" finished size**

- Step 1.** Begin Star Block assembly by creating flying geese units for the Star Block center. Draw a diagonal line on the wrong side of (32) 1 1/2" star center squares.
- Step 2.** Place (1) 1 1/2" star center square onto the corner of (1) 1 1/2" x 2 1/2" star background rectangle, RST and edges aligned.
- Step 3.** Sew along the drawn diagonal line. Trim the excess corner fabric to a 1/4" and press to the corner.
- Step 4.** Repeat stitch and flip techniques on the remaining 1 1/2" x 2 1/2" rectangle corner using an additional 1 1/2" star center square to complete (1) flying geese unit for the Star Block center. Trim the flying geese unit to measure 1 1/2" x 2 1/2" unfinished.
- Step 5.** Repeat to make (16) identical flying geese units for the Star Block centers.

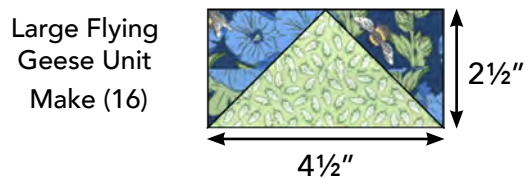


- Step 6.** Complete (1) Star Block center using (4) flying geese units, (1) 2 1/2" star center square and (4) 1 1/2" star block background squares. Assemble as shown.

- Step 7.** Repeat to make (4) Star Block Centers measuring 4 1/2" x 4 1/2" unfinished.

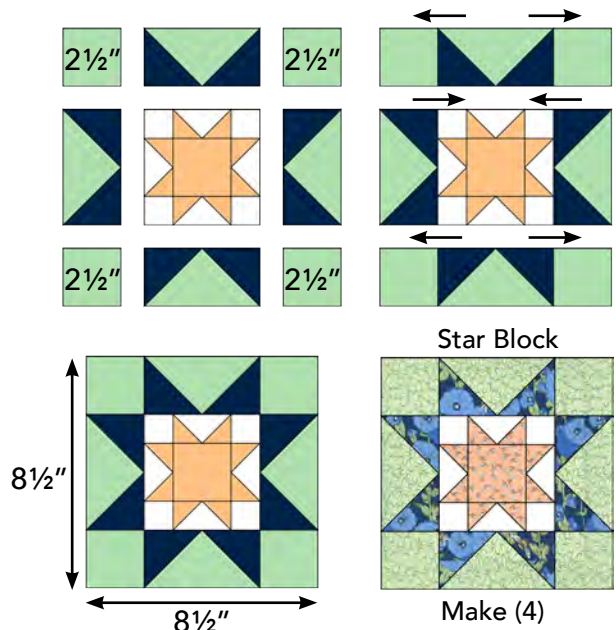


- Step 8.** Repeat flying geese unit assembly using (32) 2 1/2" navy floral print squares and (16) 2 1/2" x 4 1/2" green print rectangles to make (16) large flying geese units. Trim to measure 2 1/2" x 4 1/2" unfinished.



- Step 9.** Arrange (4) large flying geese units, (4) 2 1/2" green print squares and (1) Star Block center to form a Star Block. Assemble as shown.

- Step 10.** Repeat to make (4) identical Star Blocks measuring 8 1/2" x 8 1/2" unfinished.



## Making the Chicken Block:

### 8" x 8" finished size

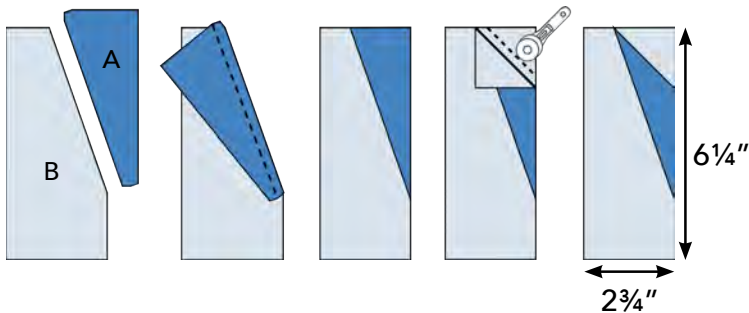
**Step 11.** Gather the following to make (1) right facing Chicken Block:

- From (1) Chicken Print Fabric:
  - (1) 2" square; draw a diagonal line on the wrong side of the square.
  - (1) 2" x 1¼" rectangle.
  - (1) Template A.
  - (1) 4¾" square.
- From (1) Chicken Beak Fabric:
  - (1) ¾" x 2" rectangle.
- From (1) Background Fabric:
  - (2) 1¼" squares; draw diagonal lines on the wrong side of each square.
  - (1) 1¼" x 2" rectangle.
  - (3) 2" squares; draw diagonal lines on the wrong side of each square.
  - (1) 2" x 4½" rectangle.
  - (1) 2" x 4¾" rectangle.
  - (1) Template B.
  - (1) 1½" x 8½" rectangle.
  - (1) 1¾" x 8½" rectangle.

**Step 12.** Sew (1) Template B background piece onto the left side of (1) Template A chicken fabric piece. Press toward Template A. Unit should measure 2¾" x 6¼" unfinished.

**Step 13.** Place (1) 2" background square with a drawn diagonal line onto the top right corner of the unit created in Step 12, RST.

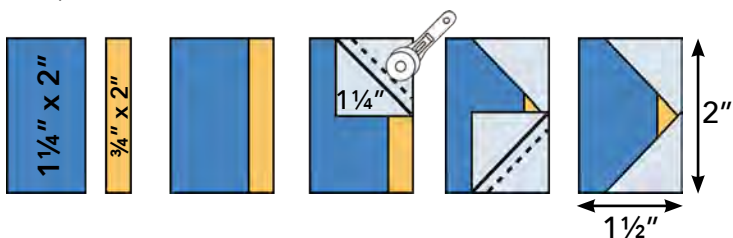
**Step 14.** Repeat stitch and flip techniques as shown to complete the Chicken Tail.



**Step 15.** Sew (1) ¾" x 2" chicken beak rectangle and (1) 1¼" x 2" chicken fabric rectangle together as shown. Unit should measure 1½" x 2" unfinished.

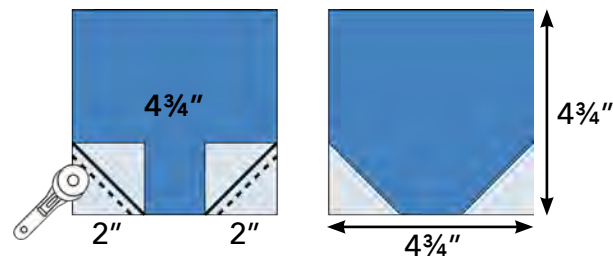
**Step 16.** Place (1) 1¼" background fabric square onto each corner of the chicken beak side of the unit, RST.

**Step 17.** Repeat stitch and flip techniques as shown to complete the Chicken Beak.



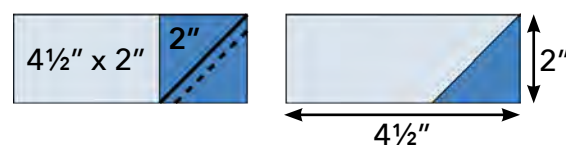
**Step 18.** Place (1) 2" background fabric square onto each bottom corner of (1) 4¾" chicken fabric square RST.

**Step 19.** Repeat stitch and flip techniques as shown to complete (1) Chicken Body measuring 4¾" x 4¾" unfinished.



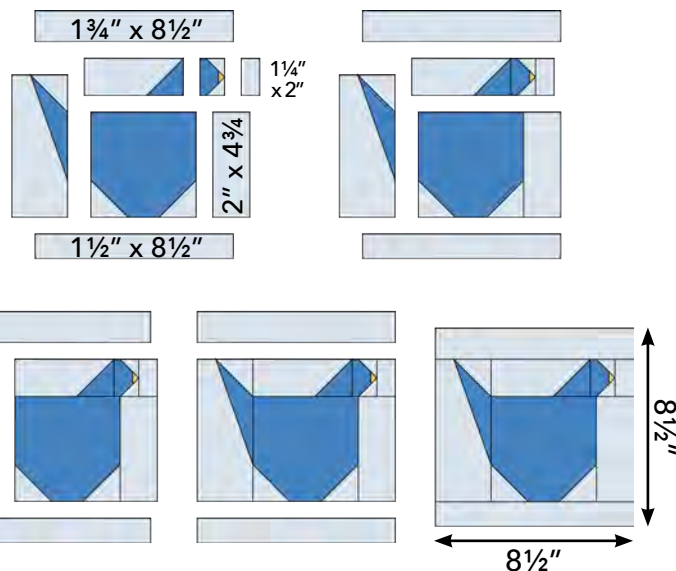
**Step 20.** Place (1) 2" chicken fabric square onto the bottom right corner of (1) 2" x 4½" background fabric rectangle, RST.

**Step 21.** Repeat stitch and flip techniques as shown to complete (1) Chicken Head measuring 2" x 4½" unfinished.



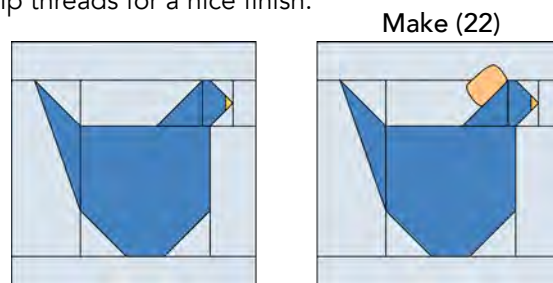
**Step 22.** Arrange the remaining gathered Chicken Block pieces as shown.

**Step 23.** Sew together. The completed Chicken Block should measure 8½" x 8½" unfinished.



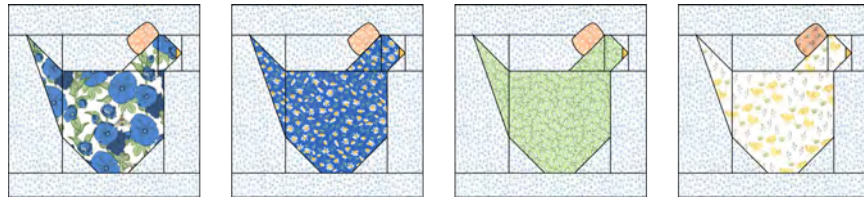
**Step 24.** Choose (1) fusible applique Reversed Chicken Bonnet, and peel the paper from the glue side of the applique.

**Step 25.** Place the bonnet as shown. Fuse and stitch down using a thread color and decorative stitch of your choice. Press and snip threads for a nice finish.



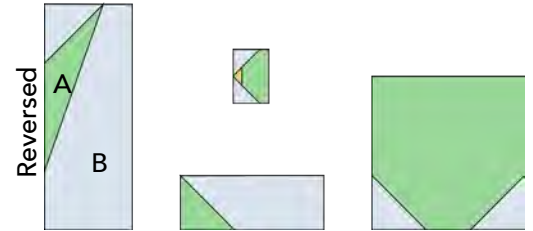
**Step 26.** Repeat to make (22) right facing Chicken Blocks measuring  $8\frac{1}{2}'' \times 8\frac{1}{2}''$  unfinished.

Right Facing  
Chicken Blocks



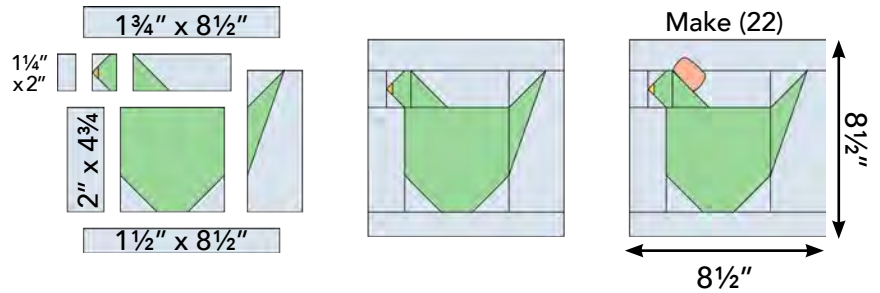
**Step 27.** Gather the pieces listed in Steps 11a-11c to make a left facing Chicken Block. Use Reversed Templates A and B for the left facing Chicken Block.

**Step 28.** Make a left facing Chicken Block by completing mirror image units using Steps 12 – 21 for assembly instructions. Mirror image units for the left facing Chicken Block shown to the right.

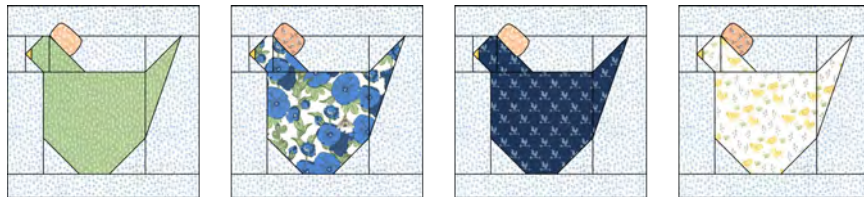


**Step 29.** Use Steps 22 – 25 to complete (1) left facing Chicken Block measuring  $8\frac{1}{2}'' \times 8\frac{1}{2}''$  unfinished. Use regular Chicken Bonnets when completing applique.

**Step 30.** Repeat to make (22) left facing Chicken Blocks measuring  $8\frac{1}{2}'' \times 8\frac{1}{2}''$  unfinished.



Left Facing  
Chicken Blocks



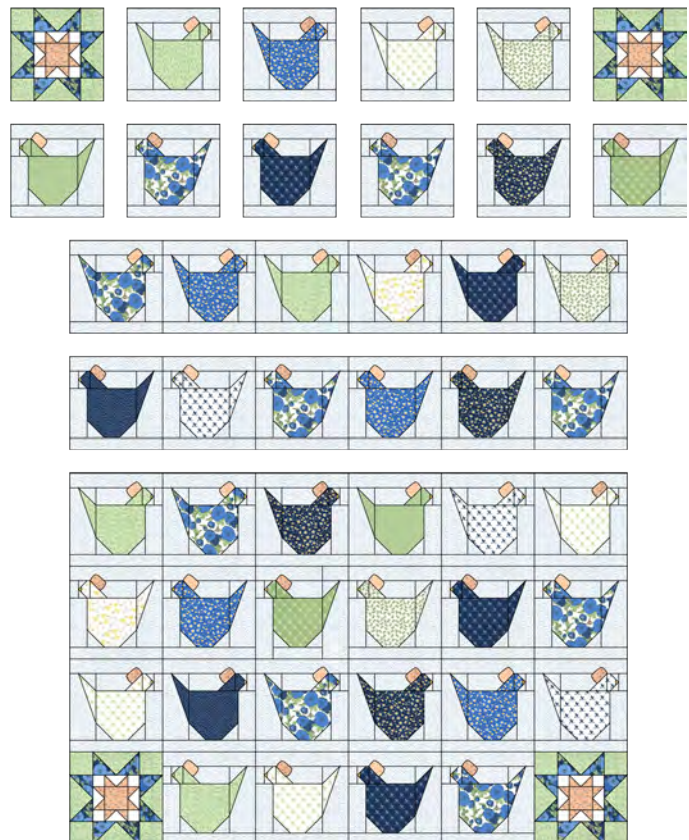
## Quilt Assembly:

**Step 31.** Arrange Star Blocks and Chicken Blocks in a  $6 \times 8$  grid as shown. Use Star Blocks in the four corners of the quilt. Use right facing Chicken Blocks in odd numbered block rows, and left facing Chicken Blocks in even numbered block rows. Arrange Chicken Blocks for even color and print distribution.

**Step 32.** Sew the blocks together in horizontal rows, alternating the direction in which you press the seams in each row.

**Step 33.** Sew horizontal block rows together to complete the quilt top. The quilt top should measure  $48\frac{1}{2}'' \times 64\frac{1}{2}''$  unfinished.

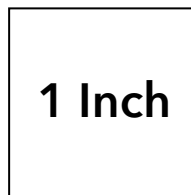
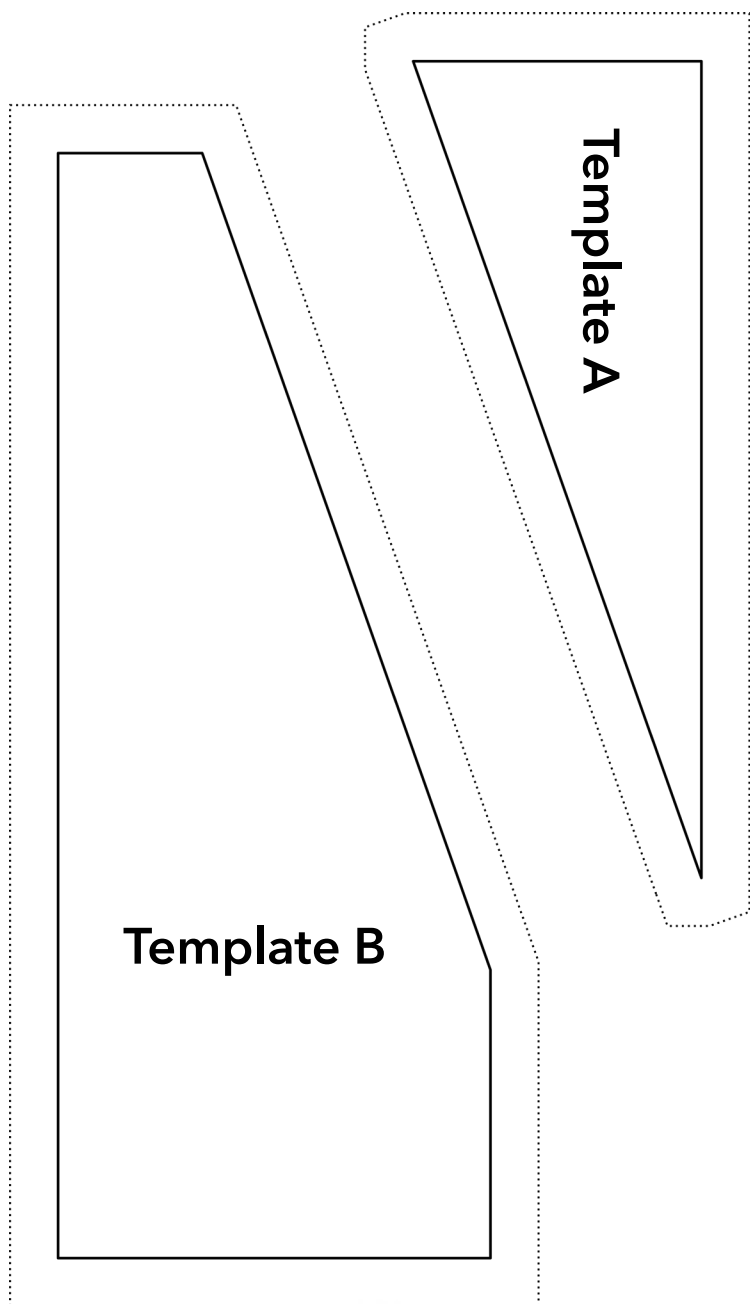
**Step 34.** Quilt and bind as desired.





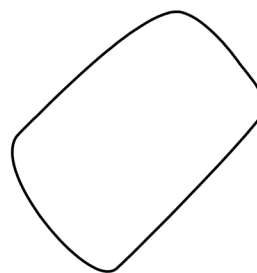
*moda*  
FABRICS + SUPPLIES

# Chicken Coop Templates



Print at 100%  
or Actual Size.

*moda*  
FABRICS + SUPPLIES



Chicken Bonnet  
Applique Template  
does not include 1/4"  
seam allowance.

Templates A & B are for the  
**Right** Facing Chicken Block.

To reverse Templates A & B for  
the **Left** Facing Chicken Block,  
place templates onto fabric,  
printed side down.

Chicken Bonnet Template is for the **Left** Facing  
Chicken Block.

To reverse the Chicken Bonnet Template for  
the **Right** Facing Chicken Block, trace template  
onto fusible web, printed side down.

Trace (22) Chicken Bonnets and (22) **Reverse**  
Chicken Bonnets onto the smooth side of  
fusible web.

# Chicken Coop

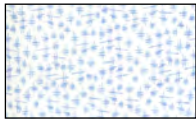
Featuring  
**Break of Day**  
 by  
 Sweetfire Road

*moda*

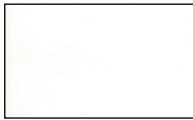
A new day breaks over the countryside and the sky is painted with pretty shades of peach and yellow. The air is sweet with the scent of green, growing crops, and the sun is shining. The world feels fresh, and full of possibilities.

Break of Day is the debut collection from Jackie MacDonald of Sweetfire Road, marrying inspiration from vintage storybooks with the love of a bright sunny day in the country.

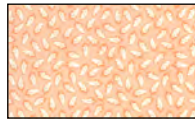
## Fabric Requirements



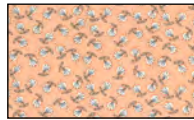
**Background**  
 43104 11  
 3 yards



**Star Background**  
 43104 21  
 1/8 yard



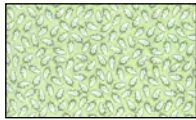
**Applique Bonnets & Binding**  
 43102 13  
 5/8 yard



**Applique Bonnets & Star Centers**  
 43107 13  
 1/4 yard



**Navy Floral Print for Stars**  
 43101 14  
 1/4 yard



**Green Print for Stars and Chickens**  
 43102 17  
 1/2 yard



**Chicken Beaks**  
 43106 18  
 1/8 yard

## 11 Assorted Ivory, Green, Light Blue and Navy Prints for Chickens



43103 15  
 1/4 yard



43108 21  
 1/4 yard



43107 11  
 1/4 yard



43104 16  
 1/4 yard



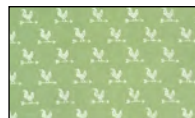
43101 21  
 1/4 yard



43108 14  
 1/4 yard



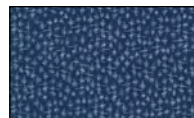
43103 14  
 1/4 yard



43108 16  
 1/4 yard



43105 11  
 1/4 yard



43104 14  
 1/4 yard



43108 11  
 1/4 yard

**Backing Required:** 4 yards

**Batting Required:** 56" x 72" piece of batting

**Fusible Web for Raw Edge Applique (Optional)**



MY.MODAFABRICS.COM  
 PS43100 SUGGESTED RETAIL \$10.00

© 2021